

# Inference Studio QuickStart 1

## *Get Started with Inference Studio*

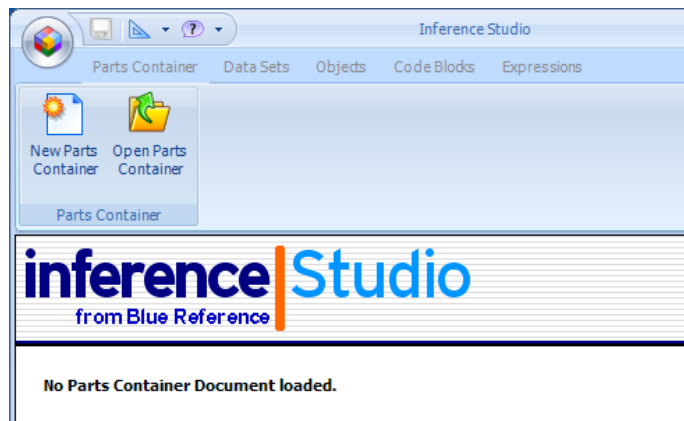
---

This Inference Studio QuickStart shows you how to:

- Create a new project in Inference Studio.
- Add and execute R code.

### 1. Create a new project in Inference Studio

1. First, open Inference Studio: From the Windows Start menu, select **All Programs > Inference > Inference Studio**.



2. Inference Studio allows you to keep all of your data analysis pieces in one place. An Inference **Parts Container** is simply an Inference document that can include R data sets, objects, code blocks, and expressions.

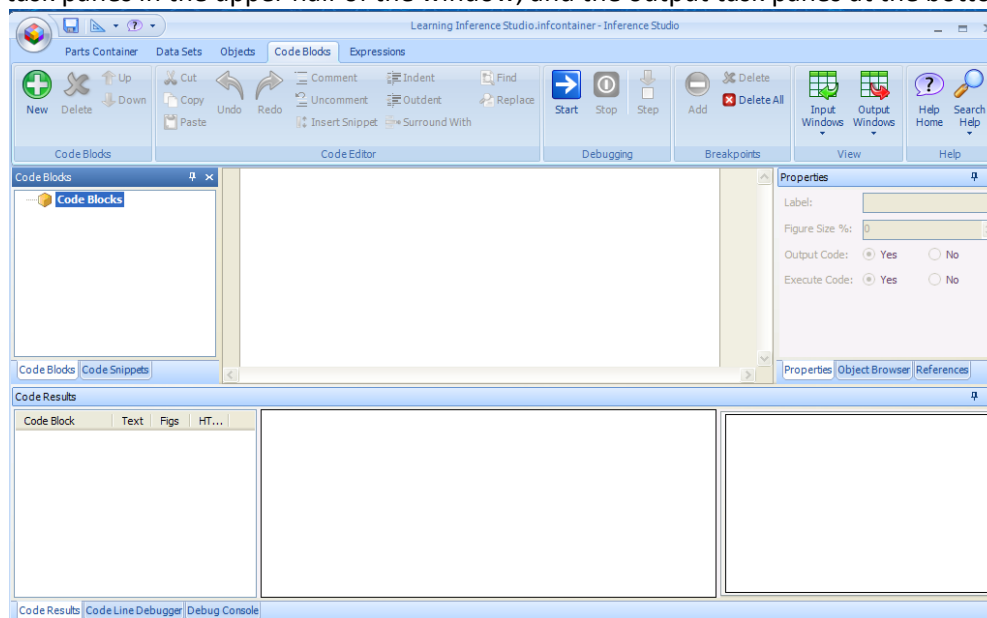
To create a new Inference Parts Container document, click **New Parts Container**, then select a location and file name. Compare your results to the following:



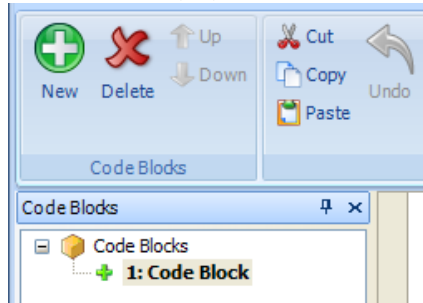
## 2. Add R Code

To add R code to your Parts Container, create a Code Block:

1. Click the **Code Blocks** tab. Notice the default task pane arrangement presents the input task panes in the upper half of the window, and the output task panes at the bottom.



2. Click the **New** ('+') icon. A new Code Block will appear:

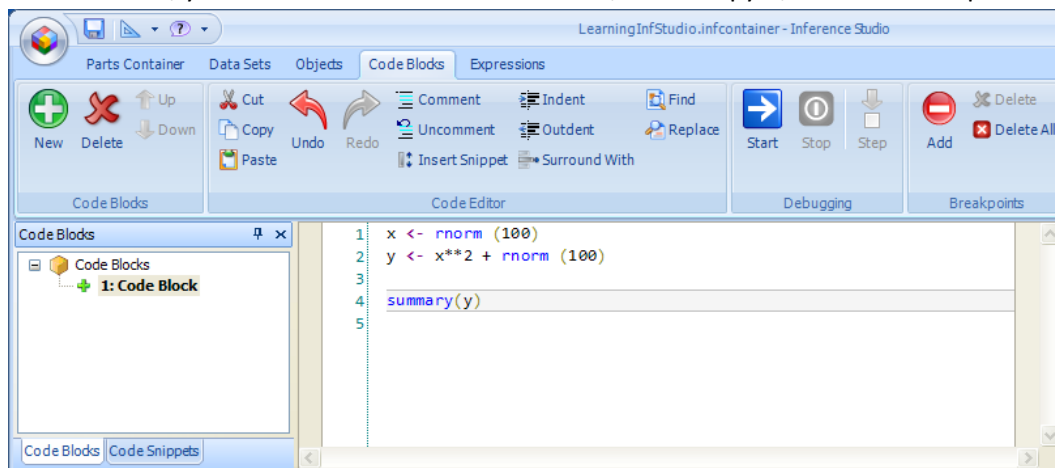


3. In the code editing window, insert the following three lines of code:

```
x <- rnorm (100)
y <- x**2 + rnorm (100)

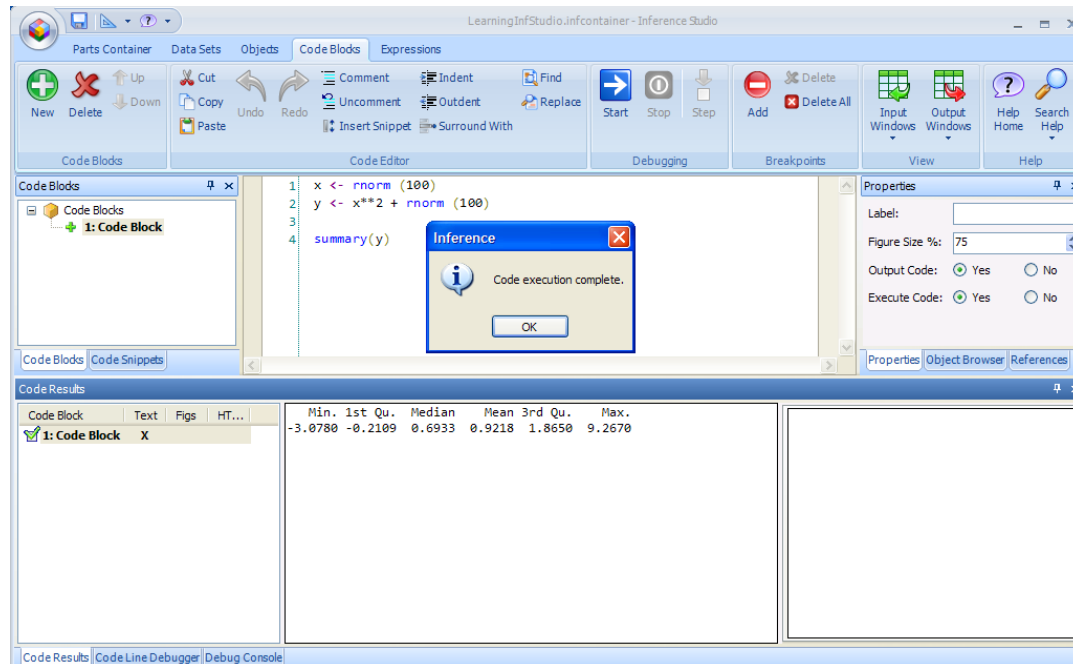
summary(y)
```

4. Notice that several code editing features are now enabled. For example, if you click a line of active code, you can indent or comment the line, cut or copy it, or add a breakpoint.



5. To run the code, click **Start**.

6. When the code execution is complete, the results will appear in the **Code Results** window.



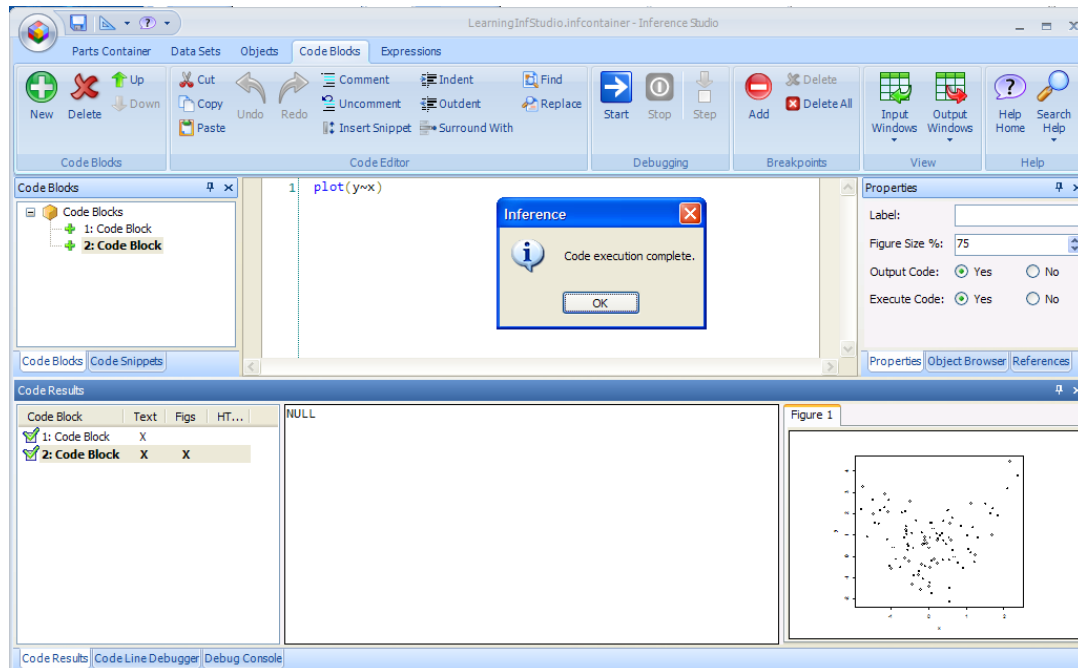
### 3. Add More R Code

Now we will use the x and y data created in the first code block to create a plot in the second code block. Insert a second code block as follows:

1. In the Code Blocks menu, click **New**.
2. In Code Block Editor, insert the following line of code:

```
plot(y~x)
```

3. Click **Start** or press **F5** to run the code. The plot appears as Figure 1 in the **Code Results** window.



4. When working with multiple blocks of code, you can control which code blocks execute and which do not. In the Properties window for each code block: for **Output Code**, select **No**.